



EPOCA OTTOCENTO

Seasoned slaked lime based paint for interiors and exteriors

RIALTO EPOCA OTTOCENTO has a brushed mat and glazed decorative appearance. It is composed of seasoned slaked lime, natural earth, selected Carrara marble chippings, inorganic oxides, and mineral additives.

PROPERTIES

RIALTO EPOCA OTTOCENTO is marked by and stands out for the following characteristics:

- it allows excellent breathability: 430 g/m²-24h (DIN 53122 Regulations), $\mu=140$, Sd=0.05 m
- it adheres perfectly to backing (32 kgf/cm²)
- it withstands alkali corrosion
- it is highly abrasion resistant
- it is non-flammable - does not flake
- it is a reversible finish
- specific gravity: 1.38 ± 0.03 kg/l
- pH: 13± 0.5
- viscosity: non-Newtonian fluid; average value 8,000 ± 1.000 mPas
- dry residue: 54 ± 0.1% by weight

PURPOSES

RIALTO EPOCA OTTOCENTO is ideal for use on exterior masonry surfaces to which an "old-lime" watercolor effect is desired, as required by the Supervisory Boards for Cultural and Environmental Heritage.

RIALTO EPOCA OTTOCENTO is widely used especially in carrying out historic restoration work.

Provided surfaces are sound and clean, **RIALTO EPOCA OTTOCENTO** coating can be applied to:

- fine plasters
- coarse plasters
- tuff
- surfaces smoothed down with **RIALTO WALLCEM**
- surfaces treated with adhesion promoter **RIALTO FONDO DI ADERENZA**
- special dehumidifying plasters, with preventive and restoring action

WORKING INSTRUCTIONS

- prepare scaffolding so as to allow continuous application until architectural impediments are encountered (string-courses, corners, joints, etc.)
- on exterior patched plaster or surfaces with damaged old paint, remove old paint, level off entire surface using **RIALTO WALLCEM** and allow at least 24 hours before starting the finishing treatment
- if the surface is sound and smooth but not compatible with application of lime based coating, (bad adhesion), for example acrylic paints and coatings, apply one or two coats of adhesion promoter **RIALTO FONDO DI ADERENZA** and let it dry for at least 48 hours
- on extremely porous or dusty exterior surfaces, such as tuff, apply to fully saturate the surface a coat of hardening water-repellent anti-saline efflorescence single-component **RIALTO DURASIL**, and allow at least 48 hours before applying **RIALTO EPOCA OTTOCENTO**
- to give the plaster an anti-saline efflorescence and water-repellent treatment, apply to fully saturate the surface a coat of **RIALTO ISOCAL** on perfectly dry surfaces and allow at least 48 hours before applying **RIALTO EPOCA OTTOCENTO**
- stir thoroughly before use, making sure the product is well mixed; if not, use a mechanical mixer
- apply using a brush, diluting the product to not more than 25% with water
- allow 24 hours before applying next coat
- do not apply at air surface temperature below 8°C (46°F) or exceeding 35°C (95°F) and relative humidity of the air >75%.
- store the product at a temperature of above 5°C (41°F) and not exceeding 30°C (86°F)
- protect applied coat from rain for approximately 48 hours
- it is advisable to use pastel colors only, as well as white
- do not pollute the environment
- dispose of product with care
- dispose of waste through authorized waste disposal services

COVERING CAPACITY

Covering capacity is approximately 3-3.5 m²/l (123-143 sq.ft./gal) for two coats.

PACKAGING

RIALTO EPOCA OTTOCENTO is available in 15 l containers.

COLOR RANGE

RIALTO EPOCA OTTOCENTO is available in a wide range of colors. See relevant color chart and/or Collezione Italia fan deck. Shades not included in the color range are also available at extra cost depending on the shade. A sample of the color must be provided. Minimum quantity: 75 l.

RIALTO EPOCA OTTOCENTO base 100 (white base) can be tinted with **RIALTO INORGANIC TINTING PASTES** with a max suggested quantity of 6% by weight

Since this is a mineral product, the color may be different from the sample color due to different production batches, different absorption rate of substrates or weather conditions during which the product is applied. For this reason, it is advisable to work using the same production batch.

REFERENCES

For further information regarding the product mentioned in the text, see the following technical sheets:

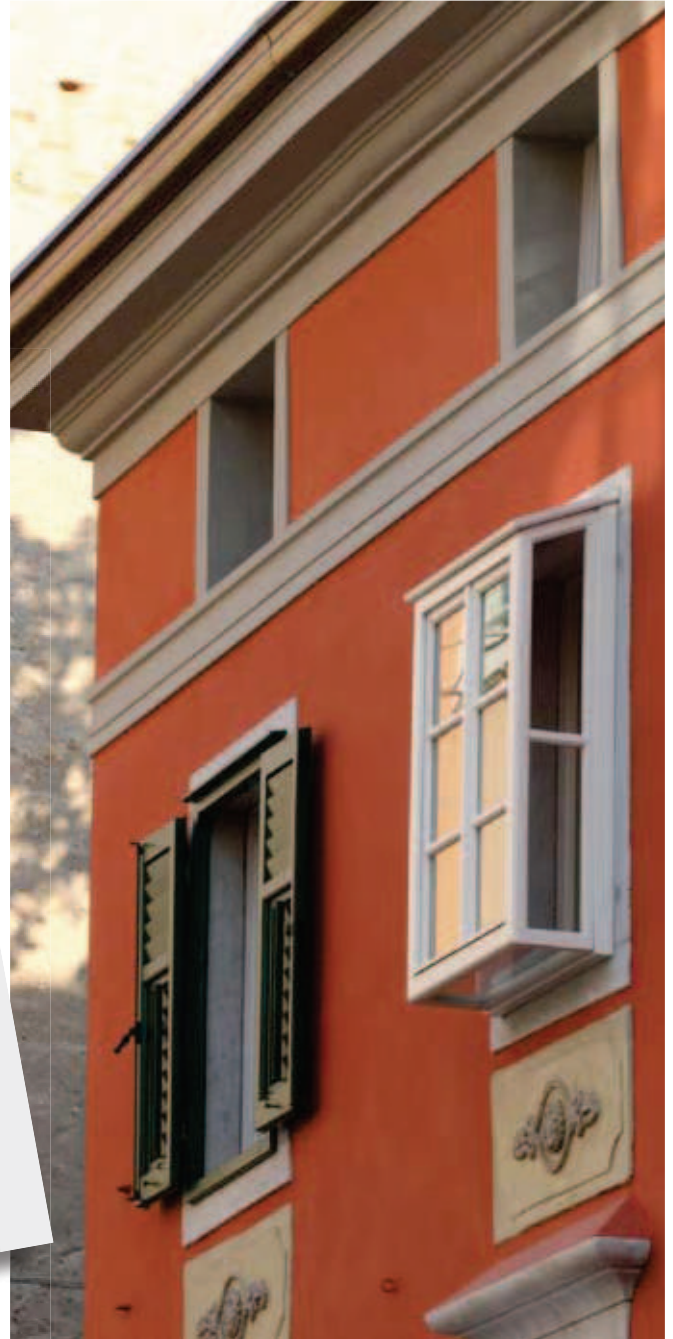
RIALTO WALLCEM BIANCO

RIALTO FONDO DI ADERENZA

RIALTO ISOCAL

RIALTO DURASIL

WORLD OF COLORS LEAFLET



For further help or information regarding the products in the **RIALTO** range contact your local dealer.

Every care has been taken to ensure that the information provided in this technical data sheet is accurate. **Harpo** is unable to guarantee results as it has no control over the conditions under which its products are applied.

HARPO spa • rialto division
via torino, 34 • 34123 trieste • italia • phone +39 040 318 6611 • fax +39 040 318 6666
rialto@rialto-colors.com - www.rialto-colors.com



The Quality Management System of HARPO spa meets the requirements of UNI EN ISO 9001:2000. Certificate No. IT03/0851